

Achieving 2x Test Capacity: Trepp's Success with LambdaTest's HyperExecute

Success Metrics —————

2x

Parallel Tests

45%

Reduction in test execution time

Table of Contents

- 3 Introduction
- 3 About Trepp
- 4 Challenge: Expanding Quality At Speed In Digital Transformation
- 5 Choosing LambdaTest: Moving To The Cloud For End-To-End Automation
- 6 Transformative Results: How LambdaTest Accelerated Trepp's QA Strategy
- 7 Key Benefits And Results
- 9 A Future-Ready Partnership With LambdaTest
- 10 About LambdaTest



Introduction

Trepp, a leading provider of data and analytics for the commercial real estate and finance industry, faced challenges in maintaining quality standards amidst shorter sprints and frequent rollouts. To enhance delivery capabilities and accelerate test cycles, Trepp adopted LambdaTest's HyperExecute and KaneAI. This shift transformed their QA processes, enabling faster execution, seamless cross-browser automation, and predictive testing insights for a competitive edge.

About Trepp

Founded in 1979, **Trepp** is a subsidiary of Daily Mail and General Trust (DMGT), a British media company catering to consumer media, insurance risk, property information, education technology, and events & exhibitions. Over the past 30 years, Trepp has emerged as a pioneer in dispensing insightful data and accurate analytics to the CMBS, CRE, and CLO banking markets. Trepp has been providing thorough, far-reaching, and comprehensive information to its clients who rely entirely on their data to make significant decisions.

At a glance

Industry :

Commercial Real Estate (CRE) and Finance industry

Challenge :

Maintaining quality amidst frequent rollouts and limited real device testing strained Trepp's QA processes.

Location :

New York, USA

Key Highlight :

With LambdaTest, Trepp achieved 50% faster test execution, doubled parallel testing, and predictive insights via KaneAI.

Solution Used :

[HyperExecute](#) ↗

[KaneAI](#) ↗

Challenge: Expanding Quality at Speed in Digital Transformation

According to Anish Ohri, Head of Testing and Performance Engineering at Trepp, it is imperative to expand delivery capabilities and enhance quality-at-speed. This includes accelerating delivery cycles with faster, autonomous test cycles, increasing test automation coverage, and implementing cross-browser testing. To achieve this, Anish introduced a shift-left strategy to accelerate test cycles and incorporate cross browser automation, ensuring seamless performance across various browsers, operating systems, and configurations.

When Anish joined Trepp, he enhanced the existing QA processes and introduced cross browser testing, which had previously been absent. Frequent feature rollouts and shorter sprints introduced new challenges in maintaining quality standards. Initially, the team relied on cloud infrastructure with limited real device testing but faced issues impacting their CI/CD pipeline. To optimize testing, Anish envisioned an automated QA workflow and evaluated whether to build an in-house infrastructure or transition fully to a cloud platform.

After careful consideration, they identified several drawbacks of an in-house setup, including high costs and reliability challenges in maintaining a device lab, scalability constraints for on-demand requirements, the need for dedicated DevOps resources to manage infrastructure, and limited parallel test execution capacity. These factors made the transition to a cloud platform the most efficient and scalable solution for Trepp.

Choosing LambdaTest: Moving to the Cloud for End-to-End Automation

Trepp adopted LambdaTest's HyperExecute cloud solution initially in 2023, with parallel tests to accelerate their test executions. It allowed them to achieve the efficiency gains needed to meet growing demands. By 2024, Trepp expanded their HyperExecute usage, doubling their tests and reducing execution time even further.

As Trepp's testing demands grew, the team recognized the potential of LambdaTest's new AI-driven testing tool, KaneAI. In 2024, Trepp joined the early private beta of KaneAI, integrating it into their workflow to take advantage of its advanced capabilities. KaneAI introduced powerful AI-driven features that enabled Trepp to streamline repetitive tasks, identify testing patterns, and gain predictive insights, ultimately creating more efficient, intelligent testing cycles. With a dedicated seat for KaneAI, Trepp could leverage predictive analytics and pattern detection to anticipate issues before they affected production, helping the team accelerate the quality of releases across their applications.

Transformative Results: How LambdaTest Accelerated Trepp's QA Strategy

Trepp leveraged LambdaTest's infrastructure to address their QA challenges while achieving faster test cycles and enhanced automation coverage. By integrating HyperExecute and KaneAI, Trepp established a scalable testing ecosystem that supports high-quality releases.

Technical Compatibility and a Smooth Transition

LambdaTest's compatibility with various test automation frameworks and programming languages allowed Trepp to seamlessly integrate the new infrastructure without disrupting their existing workflows. The QA engineers, proficient in Java, used frameworks such as TestNG and JUnit for unit testing and Rest-Assured for API testing. Trepp also incorporated tools like Node.js with React for functional UI automation and TestCafe for broader automation, ensuring that all facets of their applications were comprehensively tested.

With LambdaTest's extensible and modular Selenium Grid, Trepp's QA team could run their Selenium scripts effortlessly, gaining faster insights into UI and visual bugs. The LambdaTest infrastructure enabled them to run automated tests on a variety of browsers and operating systems, ensuring a seamless user experience across all configurations, including legacy setups.

Key Benefits and Results

LambdaTest's cloud-based infrastructure brought transformative improvements to Trepp's QA processes, including:

Increased Test Coverage

Trepp expanded its testing range to cover various OS and browser configurations, including older versions, ensuring high compatibility standards for their applications. This broad test coverage allowed Trepp to deliver a consistent user experience across platforms, meeting the diverse needs of its users.

Faster Execution

With LambdaTest's HyperExecute, Trepp cut testing times dramatically, reducing test cycles from days to hours. By doubling their parallel testing capacity from 5 to 10 in 2024, Trepp could accelerate releases, meeting the demands of a fast-paced digital environment without sacrificing quality.

Enhanced Insights and Visibility

LambdaTest provided Trepp with integrated analytics, offering visibility into testing processes and enabling quicker issue resolution. This improved insight allowed Trepp's QA team to streamline debugging and address issues proactively, supporting efficient, high-quality releases.

Cost Efficiency

Switching to LambdaTest's cloud platform eliminated the need for an in-house testing lab, saving costs and freeing resources. This move allowed Trepp to focus on strategic improvements, leveraging LambdaTest's scalable infrastructure without additional DevOps overhead.

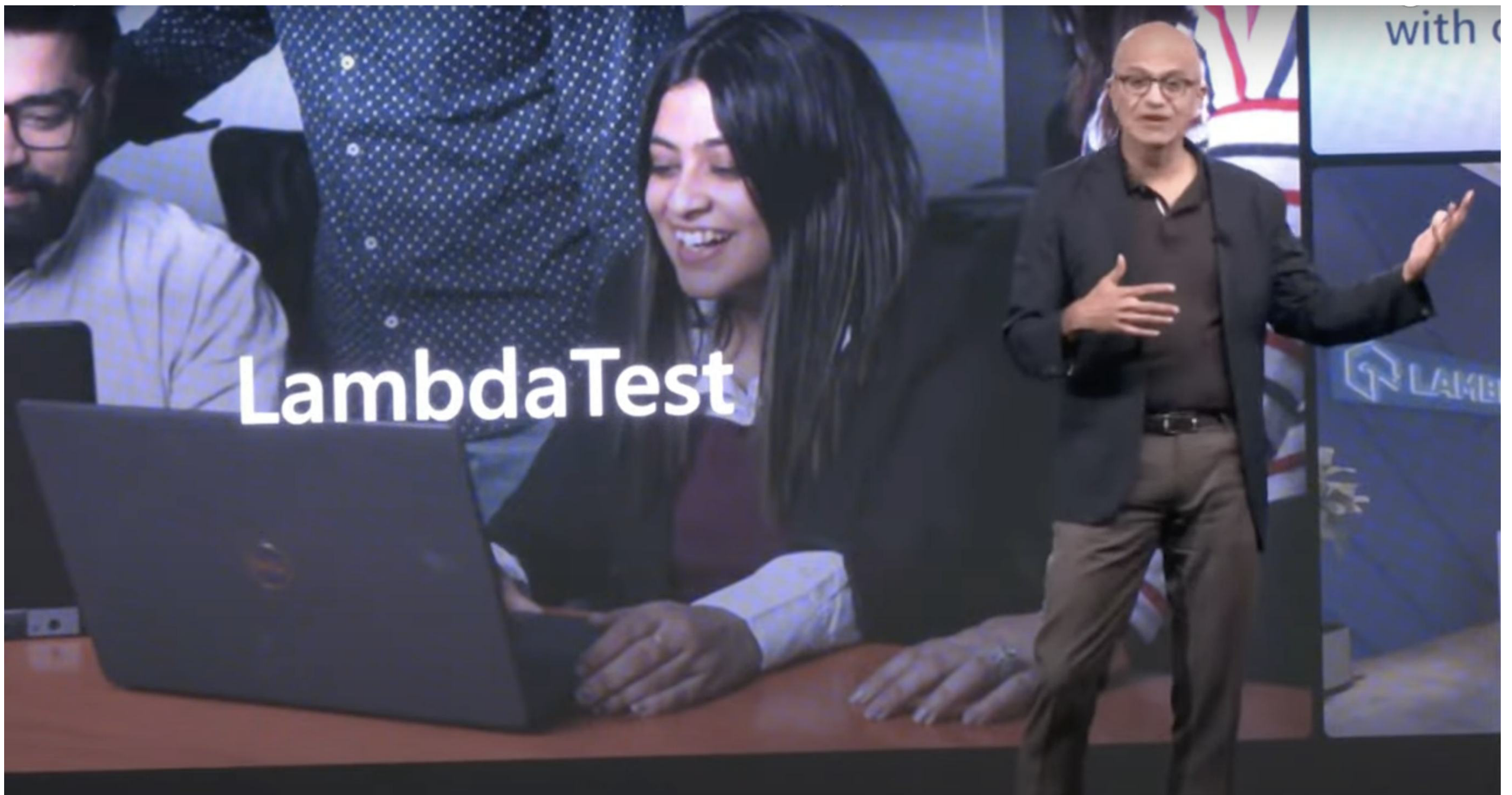


Image Source : Microsoft Future Ready Event

“

LambdaTest is creating that next level of efficiency around test automation so that people can actually focus on testing versus test orchestration.”

Satya Nadella, CEO, Microsoft

A Future-Ready Partnership with LambdaTest

LambdaTest supports the majority of Trepp's testing needs, allowing Anish's team to focus on innovation and quality without the overhead of managing testing infrastructure. By adopting LambdaTest's HyperExecute, cross-browser testing, and KaneAI, Trepp has achieved a faster, smarter, and scalable testing ecosystem that supports their shift-left strategy and accelerates product delivery in a competitive digital landscape.

About LambdaTest

LambdaTest is an AI-Powered test orchestration and execution platform that allows developers test intelligently and ship faster. Over 10,000+ customers and 2 million+ users across 132 countries rely on LambdaTest for their testing needs.

 **1.2 Bn+**
Tests

 **2M+**
Users

 **10K+**
Enterprises

 **132**
Countries

Exploratory Testing

Enhance web and app quality to ensure seamless user experience with real-time, live, exploratory testing on 5000+ devices.

KaneAI

Boost testing efficiency with an AI platform that uses natural language to create, debug and evolve tests.

Test Manager

Streamline test creation, management, & reporting for improved efficiency with a unified Test Manager.

Automation Cloud

Accelerate product releases with secure, scalable, end-to-end test automation in the cloud.

Real Device Cloud

Test on 5000+ real Android and iOS devices, cutting costs while ensuring compatibility and responsiveness.

HyperExecute

Accelerate testing speed by 70% with AI-powered orchestration for faster digital transformation

Accessibility Testing

Ensure inclusive, accessible websites with LambdaTest's manual and automated Accessibility Testing tool.

Visual UI Regression

Achieve UI perfection quickly with AI-powered visual regression testing across all platforms.



 +1 (866)-430-7087

 www.lambdatest.com

 sales@lambdatest.com

TEST INTELLIGENTLY. SHIP FASTER.

